



Outperform every day.™

ENGLISH

Installation Instructions

DRUM RING FOR REDCO® LETTUCE KING® IV

SAFETY PRECAUTIONS

To ensure safe operation, read the following statements and understand their meaning. This manual contains safety precautions which are explained below. Please read carefully.



WARNING

Warning is used to indicate the presence of a hazard that will or can cause severe personal injury or death.



CAUTION

Caution is used to indicate the presence of a hazard that will or can cause minor or major personal injury if the caution is ignored.

NOTICE is used to note information that is important but not hazard-related.

These precautions should be followed at all times.

- Check equipment before each use to insure the equipment is clean.
- Use only on stable surfaces.

FUNCTION AND PURPOSE

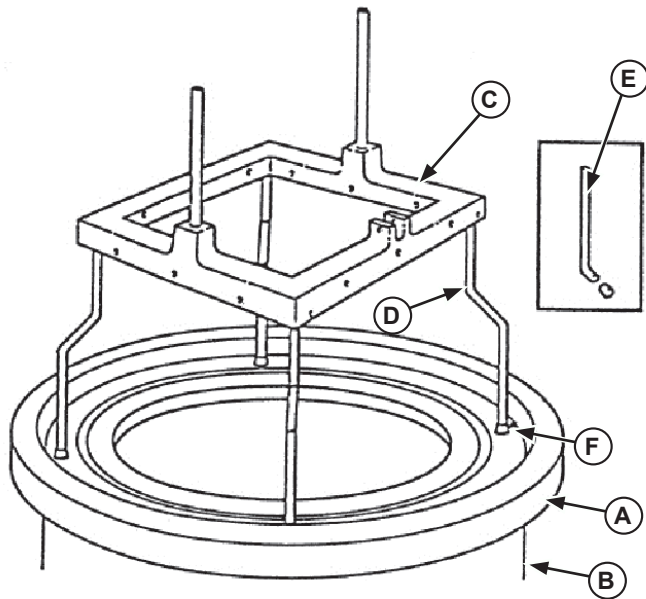
This Drum Ring has been intended for holding the Lettuce King® IV over Rubbermaid® 20 gallon and 32 gallon containers, hereafter, referred to as "drums." It has not been tested or approved for use on any other container.



Drum ring pictured with Lettuce King® IV (sold separately).

Thank you for purchasing this Vollrath Food Processing Equipment. Before operating the equipment, read and familiarize yourself with the following operating and safety instructions. **SAVE THESE INSTRUCTIONS FOR FUTURE REFERENCE.** Save the original box and packaging. Use this packaging to ship the equipment if repairs are needed.

INSTALLATION



- (A) Drum ring
- (B) Drum
- (C) Lettuce King IV
- (D) New style leg
- (E) Old style leg
- (F) Rubber foot

1. Place the Drum Ring on top of the drum. Press on the outside of the ring to verify there is no tipping or tilting when pressure is applied.
2. Secure the Lettuce King IV to the drum ring. Place all four feet on the same ring surface. Verify all four feet are firmly in contact with the ring surface and that no tilting or tipping occurs.

NOTICE: DO NOT use this drum ring with any lettuce cutter except the Redco Lettuce King IV, model number 4400N, with the new style legs (part number 379018) as shown in the drawing. If your Lettuce King has the old style legs, new style legs must be installed before using this drum ring.

CAUTION

Do not move the drum by pulling on the drum ring or the Lettuce King IV. This may cause the drum ring to move and may cause serious injury to the operator and/or damage to the equipment.

3. Follow the warnings on the label attached to the drum ring.

SERVICE AND REPAIR

Please contact Vollrath Technical Service from the list below.

VOLLRATH Technical Service • 1-800-628-0832 (USA)
• Email: techservicereps@vollrathco.com

When contacting Vollrath Technical Service, please be ready with the item number, model number (if applicable), serial number, and proof of purchase showing the date the equipment was purchased.

WARRANTY STATEMENT FOR THE VOLLRATH CO. L.L.C.

This warranty does not apply to products purchased for personal, family or household use, and The Vollrath Company LLC does not offer a written warranty to purchasers for such uses.

The Vollrath Company LLC warrants each of its products listed below against defects in materials and workmanship for the applicable period provided below. All other products manufactured or distributed by The Vollrath Company LLC are warranted against defects in materials and workmanship for a period of one year. In all cases, the warranty runs from the date of the end user's original purchase found on the receipt. Any damages from improper use, abuse, modification or damage resulting from improper packaging during return shipment for warranty repair will not be covered under warranty.

- Vollrath Redco® products – The warranty period is 2 years.
- Replacement parts – The warranty period is 90 days.

For complete warranty information, product registration and new product announcement, visit www.vollrath.com.



www.vollrath.com

The Vollrath Company, L.L.C.
1236 North 18th Street
Sheboygan, WI 53081-3201
U.S.A.

Main Tel: 800.628.0830
Fax: 800.752.5620

Technical Services: 800.628.0832
Service Fax: 920.459.5462

Canada Service: 800.695.8560