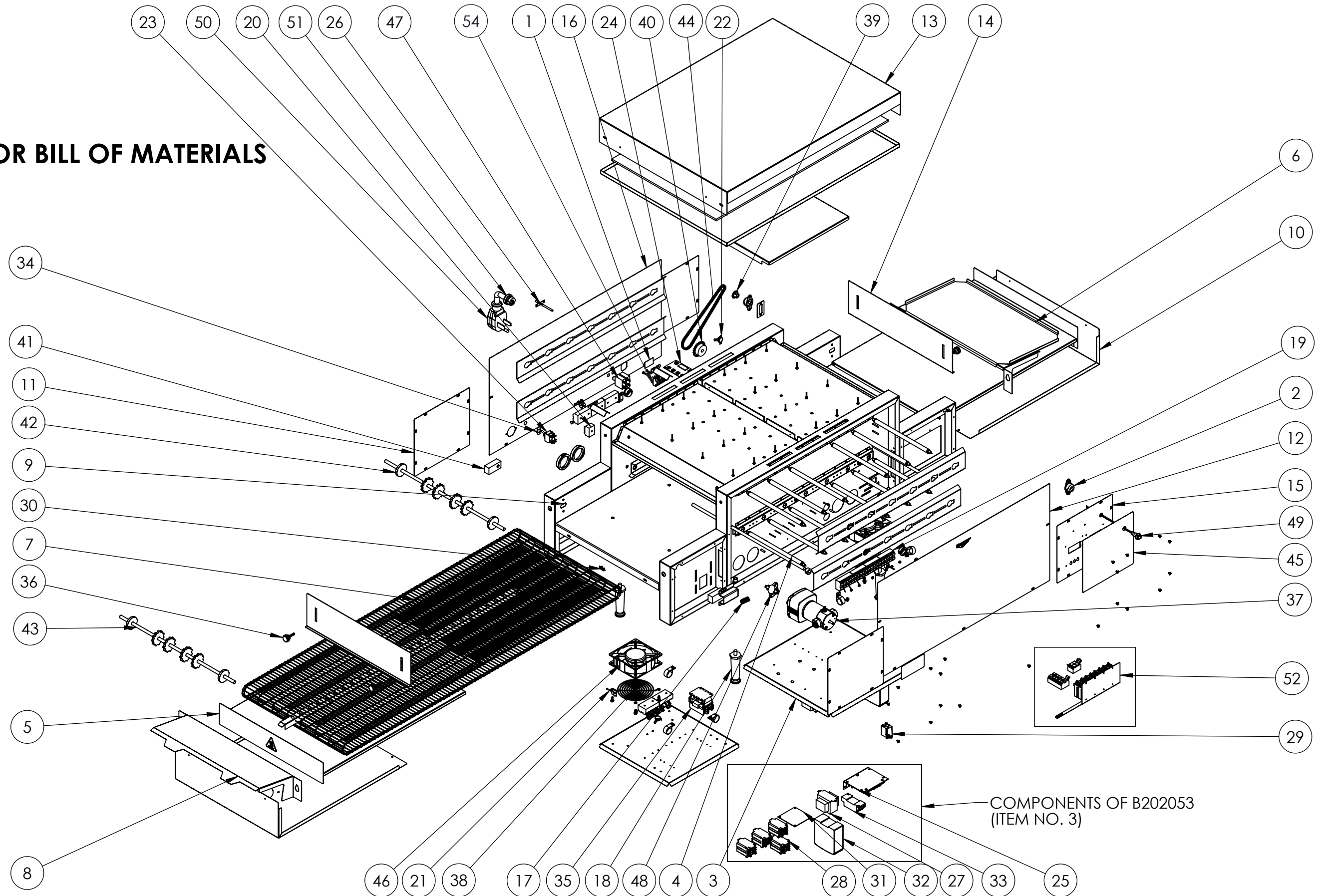


**SEE PAGE 2 FOR BILL OF MATERIALS**





**68" DIG PIZZA OVEN 6-208V 18"**

ITEM NO.	PART NUMBER	DESCRIPTION	QTY.	NOTES
1	324105	POWER CAUTION STICKER	1	
2	B201101	3/8" BEARING ASSEMBLY	2	
3	B202053	CONTROL PANEL MGD 18	1	
4	59903	HEATER TUBE 19-3/8 69.3V 525W	12	
5	B205106	18" JPO CRUMB TRAY ASSM	2	
6	B205107	18" JPO UNLOAD TRAY ASSM	1	
7	B205109	JPO 18" WIRE BELT	1	
8	B305744	18" LOAD TRAY	1	
9	B305756	PIZZA OVEN - IDLER BEARING HOUSING	2	
10	B305794	18" CONTROL BOX COVER	2	
11	B305796	SMALL BLANK SIDE PANEL	3	
12	B305797	LONG BLANK SIDE PANEL	1	
13	B305800	18" TOP COVER	1	
14	B305803	JPO 18" HEAT SHUTTER	2	
15	B305804	CONTROL SIDE PANEL	1	
16	B305808	POWER SIDE PANEL	1	
17	B400263	SPRING, .480" DIA, 1.000" LENGTH	2	
18	B400301	METAL PLATED LEG 4"	4	
19	B401033	TERMINAL BLOCK 5 POSITION	4	
20	B401034	TERMINAL BLOCK 2 POSIITON	2	
21	B401060	CORD,FAN,HP-75.24-A	2	
22	B401107	SWITCH FAN CERAMIC	2	
23	B401116	SWITCH, TOGGLE, ON/ON, 15A	1	
24	B401152	OVEN CONTROL, RSS-212, 24V	1	
25	B401153	SPEED DRIVER BOARD 24V	1	COMPONENT OF B202053
26	B401154	TEMP PROBE	4	
27	B401155	POWER SUPPLY/TRANS. 24VAC	1	COMPONENT OF B202053
28	354488-1	AB 700-HD32Z24 Relay	4	COMPONENT OF B202053
29	B401157	MOTOR CONTROL RELAY	1	
30	B401162	PLUG BUTTON, 1/2"	1	
31	B401163	CONTROL BOARD BODINE 24V	1	COMPONENT OF B202053
32	B401164	POWER SUPPLY, 24VDC	1	COMPONENT OF B202053

ITEM NO.	PART NUMBER	DESCRIPTION	QTY.	NOTES
33	B401170	MOTOR RELAY SOCKET	1	COMPONENT OF B202053
34	B401173	SWITCH PLATE, ON/OFF U-19	1	
35	B401175	CONTACTOR MANUAL. 208/240	1	
36	B401188	KNOB, W/10-32 STUD PHENOLIC	4	
37	B401215	MOTOR 240V DC BODINE	1	
38	B401220	GUARD, FAN	2	
39	B401301	11-TOOTH SPROCKET	1	
40	B401304	SPROCKET, 25B24 X 3/8	1	
41	B401353	JPO SPRING LOADED BEARING	2	
42	B401377	PO4 18" DRIVE SHAFT	1	
43	B401378	PO4 18" IDLER SHAFT	1	
44	B401399	CHAIN LADDER, 21 1/4" LONG	1	
45	B401422	PO6 CONTROL OVERLAY	1	
46	B405011	230V CLASS B FAN MOTOR	2	
47	B405014	5 AMP BREAKER	2	
48	B405028	68C THERMAL RESET	1	
49	B202052	SOFT POWER SWITCH ASSEMBLY	1	
50	B401088	6-50P, 10/3, 72" POWER CORD	1	
51	B410028	STRAIN RELIEF, HEYCO 1824	1	
52	60118	PO6 RELAY KIT -PRE-2023 MODELS	1	SEE NOTE BELOW FOR DETAILS
53	WD037	WIRING DIAGRAM PO6	1	NOT SHOWN IN EXPLODED VIEW
54	B401014	TERMINAL STRIP, 3 CIRC, 15MM	1	

\*NOTE - PART NUMBER 60118 ONLY APPLIES TO MODELS BUILT PRIOR TO JANUARY 1ST, 2023. IF IT IS NECESSARY TO REPLACE DISCONTINUED PART NUMBERS B401156 (HEAT ELEMENT RELAYS) OR B401171 (SOCKET, RELAY, ELEMENT), PART NUMBER 60118 MUST BE PURCHASED AND INSTALLED TO CONVERT THE B202053 CONTROL PANEL TO THE CURRENT RELAY DESIGN. ONCE PART NUMBER 60118 HAS BEEN PURCHASED AND INSTALLED, SUBSEQUENT RELAY REPLACEMENTS CAN BE PURCHASED INDIVIDUALLY AS PART NUMBER 354488-1 (AB 700-HD32Z24 RELAY).

**SEE PAGE 1 FOR ASSEMBLY EXPLODED VIEW**