



Project:

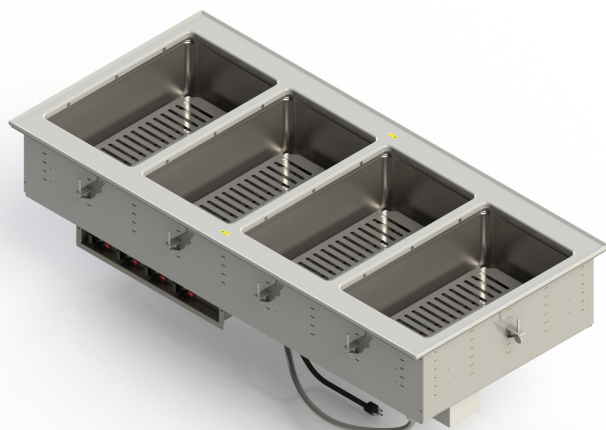
Item Number:

Quantity:

Hot Drop-ins with Dry Wells

The Vollrath Company, L.L.C.

HOT DROP-INS WITH DRY WELLS



DESCRIPTION

Vollrath's waterless hot drop-in wells meet NSF4 standards without water. They are designed for top-mount installation and do not require hard-wiring.

SHORT DESCRIPTION

Hot drop-in wells are designed to run without water, flange and full-size wells are 300-series stainless steel, insulated on all non-exposed sides, cord with plug, stainless steel remote control panel, mounting clips.

Note: Orders for drop-ins cannot be canceled or returned.

WARRANTY

All models shown come with Vollrath's standard warranty against defects in materials and workmanship. For full warranty details, please refer to www.Vollrath.com.

Agency Listings



Item No.	No. of Wells	Watts per Well	Voltage	Control
FC-4DH-01120-I	One	1000	120	Infinite
FC-4DH-01208-I		750-1000	208-240	Infinite
FC-4DH-01120-T		1000	120	Thermostatic
FC-4DH-01208-T	Two	750-1000	208-240	Thermostatic
FC-4DH-02120-I		1000	120	Infinite
FC-4DH-02208-I		750-1000	208-240	Infinite
FC-4DH-02120-T	Three	1000	120	Thermostatic
FC-4DH-02208-T		750-1000	208-240	Thermostatic
FC-4DH-03120-I		1000	120	Infinite
FC-4DH-03208-I	Four	750-1000	208-240	Infinite
FC-4DH-03120-T		1000	120	Thermostatic
FC-4DH-03208-T		750-1000	208-240	Thermostatic
FC-4DH-04208-I	Five	750-1000	208-240	Infinite
FC-4DH-04208-T		750-1000	208-240	Thermostatic
FC-4DH-05208-I		750-1000	208-240	Infinite
FC-4DH-05208-T	Six	750-1000	208-240	Thermostatic
FC-4DH-06208-I		750-1000	208-240	Infinite
FC-4DH-06208-T		750-1000	208-240	Thermostatic

FEATURES

- Top flange and drawn well are 300-series stainless steel.
- Stainless steel shroud.
- Includes gasket.
- Insulated on all sides, including between each well.
- Includes 6' (1.8 m) cord with plug.
- Stainless steel control panel with individual controls and power indicator light for each well.
- Control panel has 4' (121.9 cm) tethered connection for flexible mounting locations.
- Includes standard mounting clips for use on counters up to 3" (7.6 cm) thick for easy installation.
- Accepts full-size and fractional pans up to 6" (15.2 cm) deep.
- Adapter bars are recommended when using fractional pans.
- Not for use with plastic pans.
- **Optional** To replace drip free flange with flat flange, add "FF" to item number.

ACCESSORIES

- Sheet pan adapter available. Item No. 19186.

CLEARANCE AND ENVIRONMENT REQUIREMENTS

- Zero-clearance installation.
- Indoor use only. Room temperature and HVAC can effect performance temperatures.

Due to continued product improvement, please consult www.vollrath.com for current product specifications.

Approvals	Date



www.vollrath.com

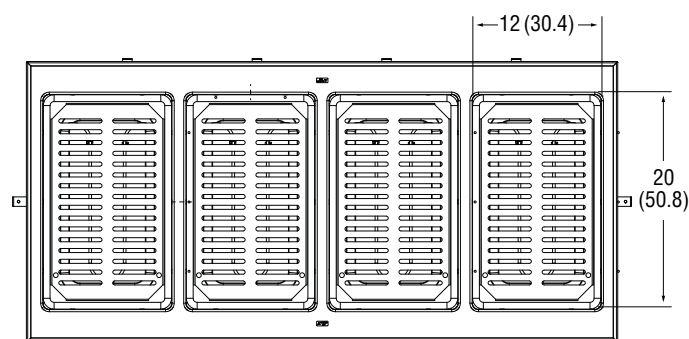
The Vollrath Company, L.L.C.

1236 North 18th Street
Sheboygan, WI 53081-3201 U.S.A.
Main Tel: 800.624.2051 or 920.457.4851
Main Fax: 800.752.5620 or 920.459.6573
Customer Service: 800.628.0830
Canada Customer Service: 800.695.8560

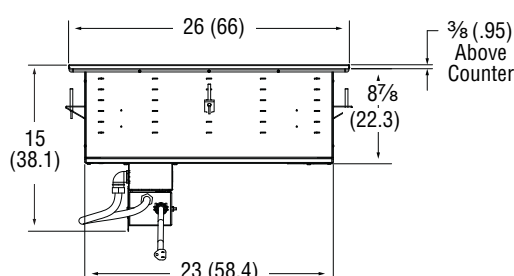
Technical Services
techservicereps@vollrathco.com
Induction Products: 800.825.6036
Countertop Warming Products: 800.354.1970
All Other Products: 800.628.0832

HOT DROP-INS WITH DRY WELLS

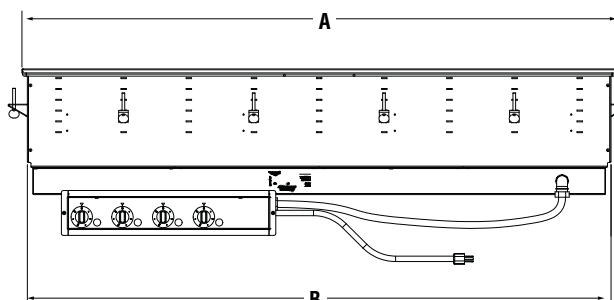
DIMENSIONS Shown in inches (cm)



Top View



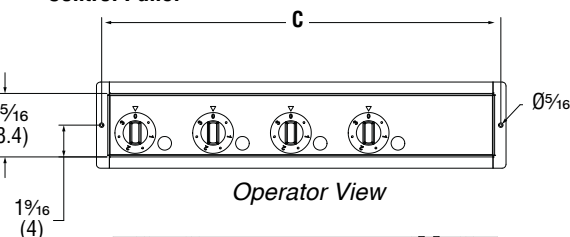
Side View



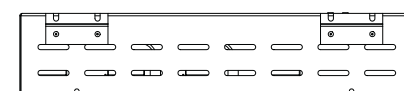
Operator View

Controls must be mounted on operator (raceway) side for proper orientation with wells.

Control Panel



Operator View



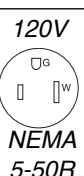
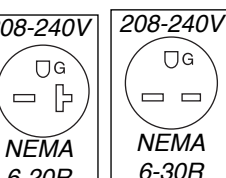
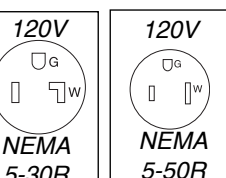
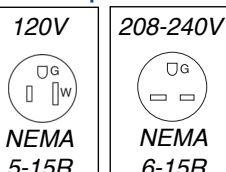
Top View

SPECIFICATIONS

Item Numbers	No. of Wells	Control	Dimensions					Electrical			
			Drop-in			Control Box		Voltage	Amps	Watts per Well	NEMA PLUG
			(A)	(B)	Cutout	(C)	Cutout				
FC-4DH-01120-I	One	Infinite	15	14	14 1/4 x 25 1/4	8	7 1/2 x 3 5/16	120	8.3	1000	5-15P
FC-4DH-01208-I		Thermostatic	(38.1)	(35.6)	(36.2 x 64.1)	(20.3)	(19.1 x 8.4)	208-240	3.6-4.2	750-1000	6-15P
FC-4DH-01120-T	Two	Infinite	28 1/4	27 1/4	27 1/2 x 25 1/4	11 1/4	11 1/4 x 3 5/16	120	8.3	1000	5-15P
FC-4DH-01208-T								208-240	3.6-4.2	750-1000	6-15P
FC-4DH-02120-I		Thermostatic	(71.8)	(69.2)	(69.9 x 64.1)	(29.8)	(28.6 x 8.4)	120	16.7	1000	5-30P
FC-4DH-02208-I								208-240	7.2-8.3	750-1000	6-15P
FC-4DH-02120-T	Three	Infinite	41 1/2	40 1/2	40 3/4 x 25 1/4	15 1/2	15 x 3 5/16	120	16.7	1000	5-30P
FC-4DH-02208-T								208-240	7.2-8.3	750-1000	6-15P
FC-4DH-03120-I		Thermostatic	(105.4)	(102.8)	(103.5 x 64.1)	(39.4)	(38.1 x 8.4)	120	25.0	1000	5-50P
FC-4DH-03208-I								208-240	10.8-12.5	750-1000	6-20P
FC-4DH-03120-T	Four	Infinite	54 3/4	53 3/4	54 x 25 1/4	19 1/4	18 3/4 x 3 5/16	120	25.0	1000	5-50P
FC-4DH-03208-T								208-240	10.8-12.5	750-1000	6-20P
FC-4DH-04208-I		Thermostatic	(139)	(136.5)	(137.2 x 64.1)	(48.9)	(47.6 x 8.4)	208-240	14.4-16.7	750-1000	6-30P
FC-4DH-05208-I								208-240	18.0-20.8	750-1000	6-30P
FC-4DH-05208-T	Five	Infinite	68	67	67 1/4 x 25 1/4	23	22 1/2 x 3 5/16	120	25.0	1000	5-50P
FC-4DH-06208-T		Thermostatic	(172.7)	(170.2)	(170.8 x 64.1)	(58.4)	(56.4 x 8.4)	208-240	18.0-20.8	750-1000	6-30P
FC-4DH-06208-I	Six	Infinite	81 1/4	80 1/4	80 1/2 x 25 1/4	26 3/4	26 1/4 x 3 5/16	120	25.0	1000	5-50P
FC-4DH-06208-T		Thermostatic	(206.4)	(203.8)	(204.5 x 64.1)	(67.9)	(66.7 x 8.4)	208-240	21.6-25	750-1000	6-50P

Notice: Do NOT modify the cord or plug on the drop-in. Modification may damage the drop-in or cause injury, and will void the warranty.

Straight Blade Receptacles



www.vollrath.com

The Vollrath Company, L.L.C.

1236 North 18th Street
Sheboygan, WI 53081-3201 U.S.A.
Main Tel: 800.624.2051 or 920.457.4851
Main Fax: 800.752.5620 or 920.459.6573
Customer Service: 800.628.0830
Canada Customer Service: 800.695.8560

Technical Services
techservicereps@vollrathco.com
Induction Products: 800.825.6036
Countertop Warming Products: 800.354.1970
All Other Products: 800.628.0832