



Outperform every day.™

Project:

Item Number:

Quantity:

BOTTOM-MOUNT FABRICATOR WELLS



Bottom-Mount Vollrath Well

DESCRIPTION

The modular drop-in is designed for bottom-mount installation and requires hard-wiring. The drop-in comes complete with wire leads for remote installation of the control module.

High-density glass-fiber insulation allows zero-clearance installation. Stainless steel wells allow use of full-size and fractional pans up to 6" (15.2 cm) deep while still providing moist heat. Adaptor bars are recommended when using fractional pans.

Drop-in meets NSF4 performance standards only when using moist heat. Operation with water is required for even heating of the food product.

ITEMS

Industry Wells

- 36352 36" Remote Control Leads, 120V (US/Canada)
- 36353 72" Remote Control Leads, 120V (US/Canada)
- 36354 36" Remote Control Leads, 208-240V (US/Canada)
- 36355 72" Remote Control Leads, 208-240V (US/Canada)

Vollrath Wells

- 36356 36" Remote Control Leads, 120V (US/Canada)
- 36360 72" Remote Control Leads, 120V (US/Canada)
- 36358 36" Remote Control Leads, 208-240V (US/Canada)
- 36359 72" Remote Control Leads, 208-240V (US/Canada)

FEATURES

- Thermostatic control
- Deep drawn well is 20-gauge stainless steel
- Standard 1000W heating element
- Standard drain is ½" (1.27 cm) stainless steel fitting welded to pan with brass nipple extending below exterior housing. Drain screen included.
- Unit insulated on sides, ends, and below element assembly with high-density glass fiber insulation
- Exterior housing is 20-gauge galvanized steel
- Available with either 36" (91.4 cm) or 72" (182.9 cm) remote control leads
- Beveled edge for easy cleaning

ACCESSORIES

- ☐ Optional mounting clips adjustable for up to 3" (7.6) thick countertops

WARRANTY

All models shown come with Vollrath's standard warranty against defects in materials and workmanship. For full warranty details, please refer to www.Vollrath.com.

Agency Listings



Due to continued product improvement, please consult www.vollrath.com for current product specifications.

Approvals	Date



Outperform every day.™

www.vollrath.com

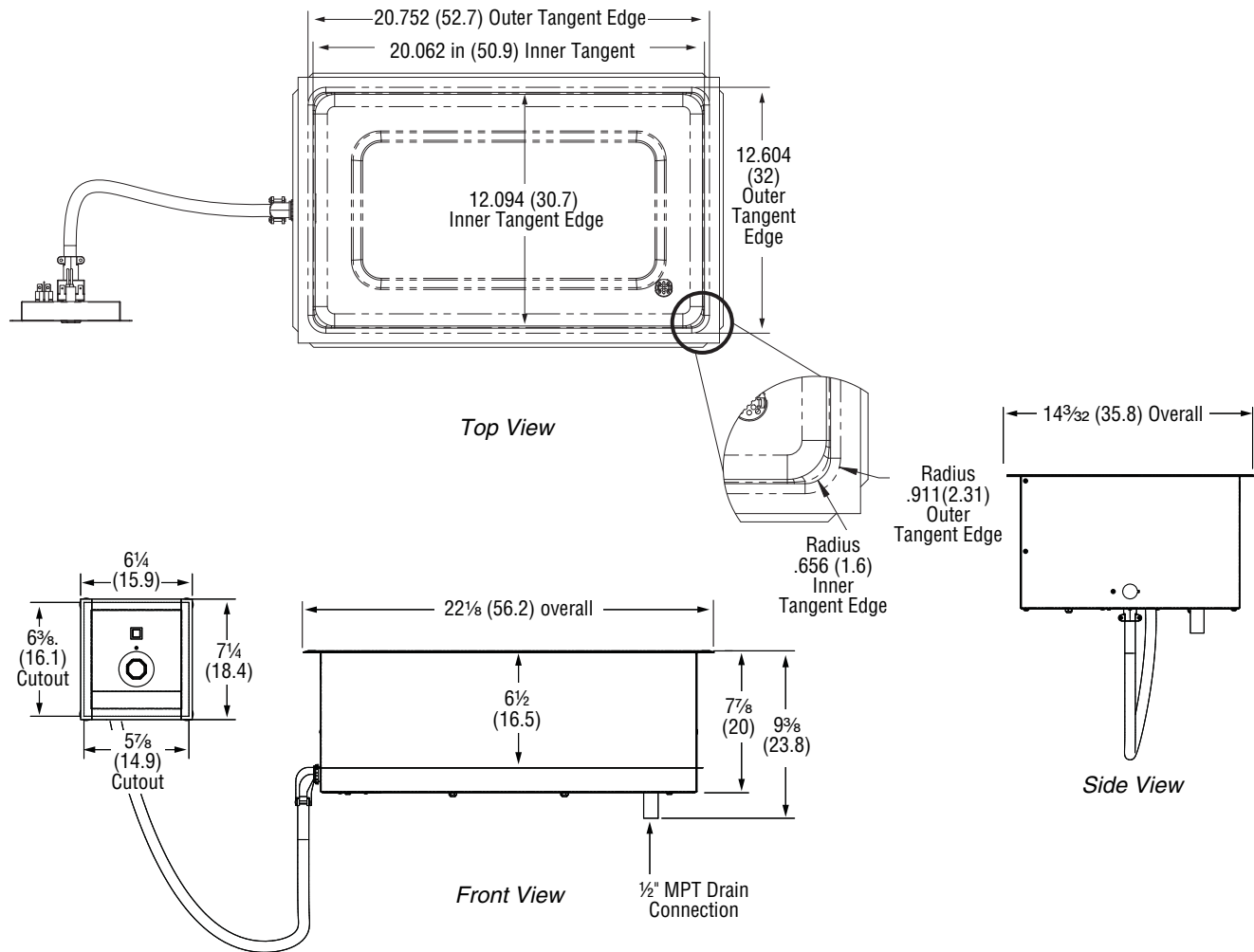
The Vollrath Company, L.L.C.

1236 North 18th Street
Sheboygan, WI 53081-3201 U.S.A.
Main Tel: 800.624.2051 or 920.457.4851
Main Fax: 800.752.5620 or 920.459.6573
Customer Service: 800.628.0830
Canada Customer Service: 800.695.8560

Technical Services
techservicereps@vollrathco.com
Induction Products: 800.825.6036
Countertop Warming Products: 800.354.1970
All Other Products: 800.628.0832

BOTTOM-MOUNT FABRICATOR WELLS

DIMENSIONS (Shown in inches (cm))



ELECTRICAL SPECIFICATIONS

Item No.	Well	Remote Control Leads In (Cm)	Hz	Watts	Volts	Amps
36352	Industry	36 (91.4)	60	1000	120	8.3
36353		72 (182.9)				
36354		36 (91.4)			208-240	3.6 - 4.2
36355		72 (182.9)				
36356	Vollrath	36 (91.4)			120	8.3
36360		72 (182.9)				
36358		36 (91.4)			208-240	3.6 - 4.2
36359		72 (182.9)				

Notes:
Sizing is for reference only. Contact Vollrath Technical Services prior to actual tooling for a parts sample. Customer is responsible for tooling.

Vollrath drop-ins are made to order and cannot be returned. It is the responsibility of the installer to ensure cut-outs on new installations are correct, or retrofit installation dimensions match up with Vollrath product dimensions. Vollrath will not guarantee that our models retrofit with specific competitive models (as competitive specifications can change without notice). We recommend countertop cut-outs be made after receipt of the Vollrath drop-in, to ensure proper fit prior to cutting into countertop materials.



Outperform every day.™

www.vollrath.com

The Vollrath Company, L.L.C.

1236 North 18th Street
 Sheboygan, WI 53081-3201 U.S.A.
 Main Tel: 800.624.2051 or 920.457.4851
 Main Fax: 800.752.5620 or 920.459.6573
 Customer Service: 800.628.0830
 Canada Customer Service: 800.695.8560

Technical Services
techservicereps@vollrathco.com
 Induction Products: 800.825.6036
 Countertop Warming Products: 800.354.1970
 All Other Products: 800.628.0832