



Outperform every day.™

Project:

Item Number:

Quantity:

NSF7 REFRIGERATED SHORT SIDE DROP-INS



NSF7 Refrigerated Short Side Drop-in

DESCRIPTION

The short side drop-in NSF7 refrigerated cold pans are designed for top-mount installation.

A full-perimeter drip edge contains spills and condensation within the stainless steel countertop area of the drop-in.

High-density polyurethane foam insulation surrounds the exterior of the well to provide the most efficient performance with energy savings.

A 3" (7.6 cm) recess lowers the food pan below the work surface to minimize the impact of ambient air. The deep display well is designed to accommodate standard 12" x 20" (30.4 cm x 50.8 cm) pans up to 6" (15.2 cm) deep.

Refrigeration coils surround the exterior side walls of well for maximum cooling. Refrigerant is R134A to meet federal standards.

Cold drop-ins are best used for holding periods up to 4 hours. For best performance, stainless steel containers are recommended.

Modular drop-in orders cannot be canceled or returned.

Agency Listings



Due to continued product improvement, please consult www.vollrath.com for current product specifications.

MODELS	36653	Two Pan
	36656	Three Pan
	36659	Four Pan

FEATURES

- Top is 18-gauge stainless steel, with 3/8" (9.5 mm) overhang on all sides and die stamped with full-perimeter drip edge. Molded breaker gasket is fitted under the drip edge.
- Flat work surface around opening.
- Seamless well is 18-gauge 300 series stainless steel
- 1" (2.5 cm) integral drain is standard.
- Inner well assembly insulated with foamed-in-place polyurethane foam insulation.
- Condensing unit suspended below well.
- Temperature control on compressor.
- For complete air circulation, two 8" x 10" (20.3 cm x 25.4 cm) openings in the cabinet are required.
- Exterior housing is 18-gauge galvanized steel.
- Optional perforated false bottom is nominal 1" (2.5 cm) high and constructed of 18-gauge Type 304 stainless steel. False bottom will reduce pan depth by same dimension.

False bottom options:

Drop-In Model	False Bottom Model
36653	70100 – Quantity 2
36656	70100 – Quantity 3
36659	70100 – Quantity 4

- Unit comes with a 6-ft. (183 cm) cord and plug and does not require hard wiring.
- On/Off switch is mounted on the side of the compressor housing.
- Positioning clips are provided to center the drop-in within the cutout.
- One year parts and labor warranty. Additional four years on the compressor.

WARRANTY: All models shown come with Vollrath's standard warranty against defects in materials and workmanship. For full warranty details, please refer to the Vollrath Equipment and Smallwares Catalog.

Approvals	Date



Outperform every day.™
www.vollrath.com

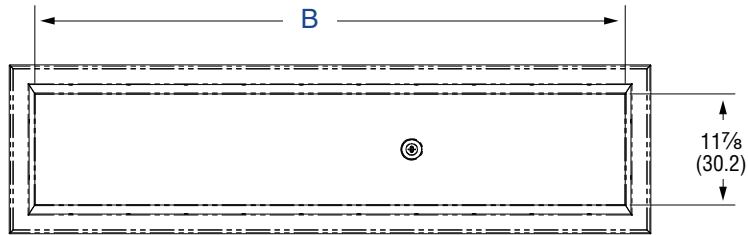
The Vollrath Company, L.L.C.
1236 North 18th Street
Sheboygan, WI 53081-3201 U.S.A.
Customer Service: 800.628.0830
Canada Customer Service: 800.695.8560
Main Fax: 800.752.5620 or 920.459.6573

Technical Services: 800.628.0832
Technical Services Fax: 920.459.5462

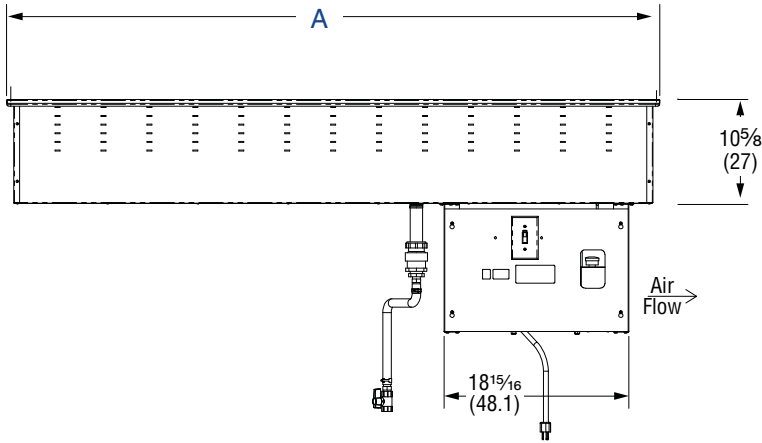
NSF7 REFRIGERATED SHORT SIDE DROP-INS

MODELS	36653	Two-pan
	36656	Three-pan
	36659	Four-pan

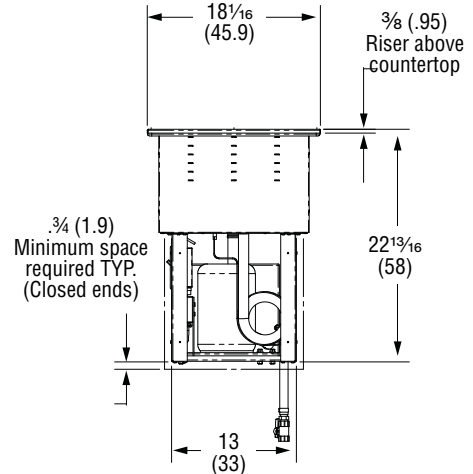
DIMENSIONS (Inches (cm))
 Opening cutout must have a $\frac{7}{8}$ " (2.2 cm) corner radius.



Top View



Front View

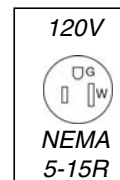


Side View

SPECIFICATIONS

Item	(A) Overall Length	(B) Interior Length	Cutout Length	Cutout Width	Compressor	Voltage	Amps	Plug
36653	45 $\frac{7}{16}$ (115.4)	40 $\frac{3}{4}$ (103.5)	44 $\frac{11}{16}$ (113.5)	17 $\frac{9}{16}$ (44)	1/4 HP	120	4.9	NEMA 5-15P
36656	66 $\frac{7}{8}$ (170)	61 $\frac{1}{2}$ (156.2)	66 $\frac{1}{8}$ (168)	17 $\frac{9}{16}$ (44)	1/4 HP	120	4.9	NEMA 5-15P
36659	88 $\frac{9}{16}$ (224.2)	82 $\frac{1}{4}$ (209)	87 $\frac{9}{16}$ (222.4)	17 $\frac{9}{16}$ (44)	1/4 HP	120	4.9	NEMA 5-15P

Receptacle



Outperform every day.™

www.vollrath.com

The Vollrath Company, L.L.C.
 1236 North 18th Street
 Sheboygan, WI 53081-3201 U.S.A.
 Customer Service: 800.628.0830
 Canada Customer Service: 800.695.8560
 Main Fax: 800.752.5620 or 920.459.6573

Technical Services: 800.628.0832
 Technical Services Fax: 920.459.5462