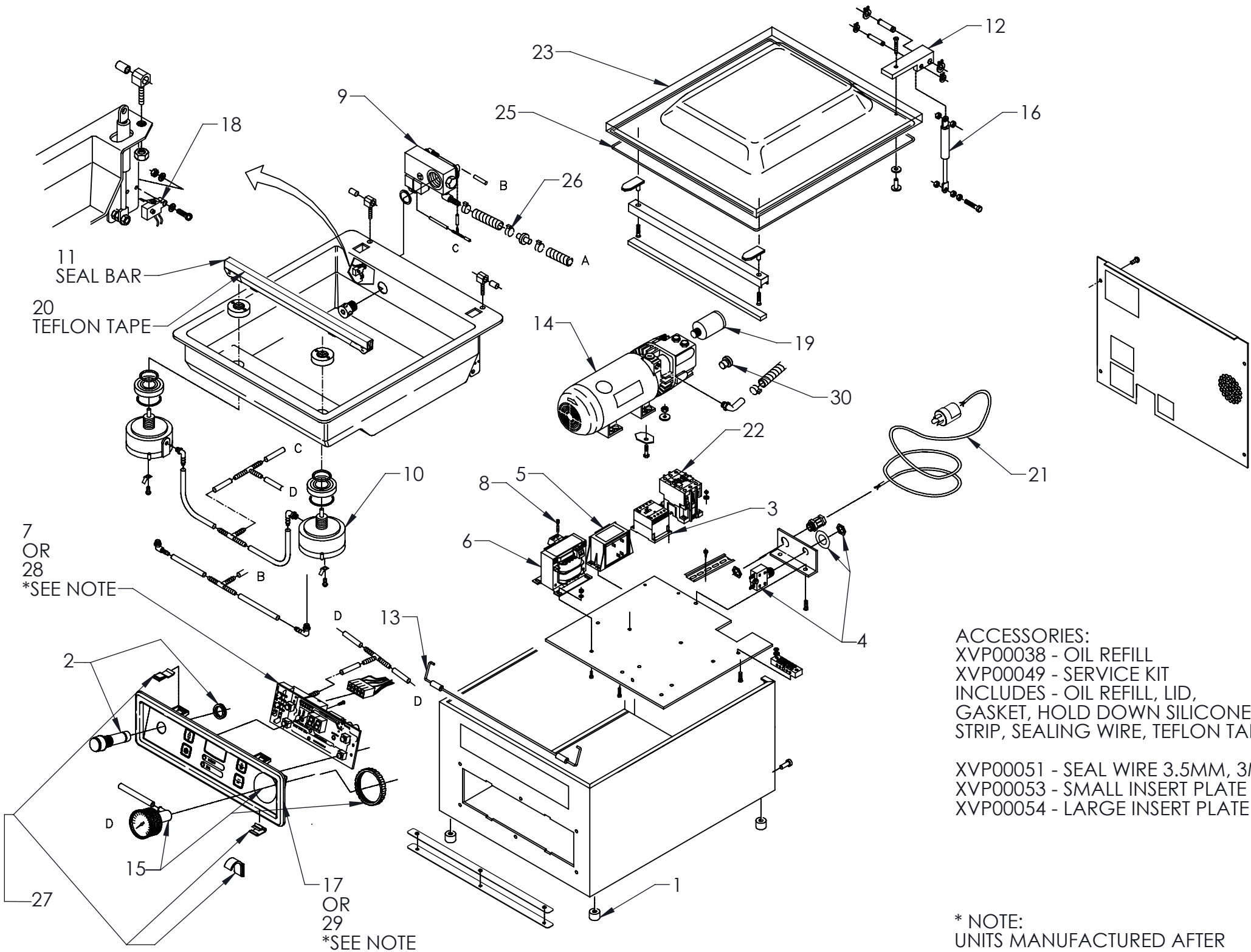


ITEM NO.	PART NUMBER	DESCRIPTION
1	XVP00001	FEET VACUUM MACHINE
2	XVP00005	POWER SWITCH DPDT 120V 1.5A
3	XVP00006	SEAL CONTACTOR RATED 120V
4	XVP00008	CIRCUIT BREAKER
5	XVP00011	CONTROL TRANSFORMER
6	XVP00012	SEAL TRANSFORMER 10V 500VA
7	XVP00014	CONTROL BOARD VP 12, TIME CONTROL
8	XVP00023	FUSE SEAL TRANSFORMER
9	XVP00025	VALVE BLOCK VP 12
10	XVP00027	SEAL CYLINDER VP 12
11	XVP00030	SEAL BAR VP 12
12	XVP00031	HINGE VP 12
13	XVP00034	LID CLOSING BRACKET VP 12
14	XVP00035	VACUUM PUMP M3 110/120V
15	XVP00040	VACUUM METER
16	XVP00041	LID GAS SPRING
17	XVP00042	FRONT PANEL VP12 COMPLETE, TIME CONTROL
18	XVP00044	SWITCH COVER INTERLOCK
19	XVP00047	EXHAUST FILTER 8M3 PUMP
20	XVP00052	TEFLON TAPE 3 METER LENGTH
21	XVP00060	POWER CORD SJTO 14 AWG
22	XVP00063	PUMP CONTACTOR
23	XVP00065	CLEAR LID
24	XVP00067	SIGHT GLASS
25	XVP00068	LID GASKET 71 INCHES
26	XVP00070	CHECK VALVE W-CLAMPS
27	XVP00073	CONTROL PANEL MOUNTING CLIP KIT
28	XVP00074	CONTROL BOARD VP 12, PRESSURE CONTROL
29	XVP00075	FRONT PANEL VP12 COMPLETE, PRESSURE CONTROL
30	XVP00076	OIL PLUG, VACUUM PUMP



ACCESSORIES:
XVP00038 - OIL REFILL
XVP00049 - SERVICE KIT
INCLUDES - OIL REFILL, LID,
GASKET, HOLD DOWN SILICONE
STRIP, SEALING WIRE, TEFLON TAPE

XVP00051 - SEAL WIRE 3.5MM, 3M LENGTH
XVP00053 - SMALL INSERT PLATE
XVP00054 - LARGE INSERT PLATE

* NOTE:
UNITS MANUFACTURED AFTER
AND INCLUDING
SERIAL NUMBER J021-00414847
WILL USE XVP00074 & XVP00075
INSTEAD OF XVP00014 & XVP00042