



Outperform every day.™

Operator's Manual

LidSaver™ 2 Mini Lid and Condiment Cup Dispensers



Item No.	Mounting	Description
LS02MS18B	Horizontal	Dispenses lids and cups with diameter 1¾ - 3¼ (4.4 - 8.3 cm)
LS02MVS18B	Vertical	Dispenses lids and cups with diameter 1¾ - 3¼ (4.4 - 8.3 cm) and max height of 1⅞ (4.8 cm)

NOTICE: Each LidSaver™ 2 Mini is factory set to dispense a particular lid or cup. If you change manufacturers or sizes, your LidSaver™ 2 Mini will need to be modified. Vollrath offers lid change out kits that are easy to install. Visit www.Vollrath.com for more information.

OVERVIEW

Thank you for purchasing this Vollrath equipment. Before operating the equipment, read and familiarize yourself with the following operating and safety instructions. **SAVE THESE INSTRUCTIONS FOR FUTURE REFERENCE.** Save the original box and packaging. Use this packaging to ship the equipment if repairs are needed.

SAFETY PRECAUTIONS

To ensure safe operation, read the following statements and understand their meaning. This manual contains safety precautions which are explained below. Please read carefully.

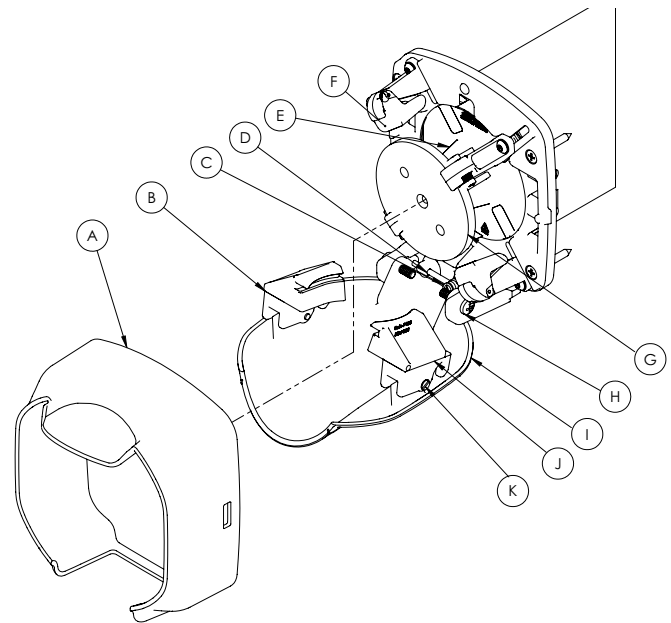
WARNING

Warning is used to indicate the presence of a hazard that will or can cause severe personal injury or death.

CAUTION

Caution is used to indicate the presence of a hazard that will or can cause minor or major personal injury if the caution is ignored.

NOTICE: Notice is used to note information that is important but not hazard-related.



- A Bezel/Housing**
- B "A" Claw.** Marked with lid manufacturer and model no.
- C Door Spring**
- D Spring Covers**
- E Piston**
- F Pivoting Pager Flipper.** For smooth lid loading.
- G Piston Lid Plate**
- H Shear Screws.** (10-24 x ⅜ R.H.M.S.)
- I Door**
- J "B" Claw.** Marked with lid manufacturer and model no.
- K Shear Screws.** (6-32 x ¾ F.H.M.S.)

Please register your product at Vollrath.com

OPERATION

1. Before loading lids, verify your lids match the manufacturer and lid number noted on the lid plate label.

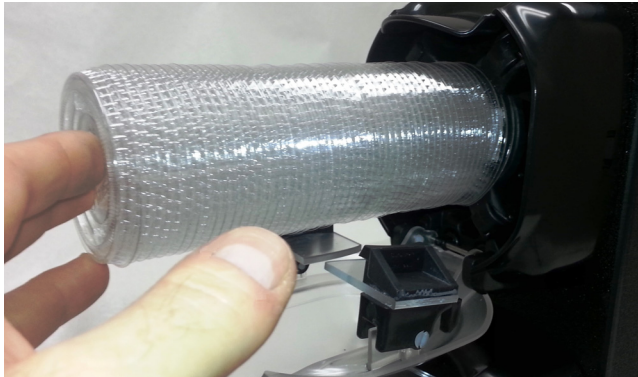


2. Open the door past 90 degrees. It will stay open.



3. Separate the lids prior to loading to release any lids that may have been pressed together during packaging.
4. Load lids or cups.
 - Lids must be loaded with the front of the lid stack facing forward.
 - Cups must be loaded with the bottom of the cup stack facing forward.

NOTICE: DO NOT overstock lids. Compressing lids may result in dispensing problems.



5. If dispensing tabbed lids, align all lid tabs either up (12:00) or down (6:00) to avoid interference with the lid claws.

NOTICE: Each LidSaver™ is factory set to dispense a particular lid or cup. If you change manufacturers or sizes, your LidSaver™ 2 Mini will need to be modified. Vollrath offers lid change out kits that are easy to install. Visit www.Vollrath.com for more information.

CLEANING

Regularly clean the inside and outside of your LidSaver™.

1. Remove all lids from LidSaver™.
2. Remove the bezel/housing (refer to installation instructions).
3. Wipe the interior and exterior with a cotton cloth and warm soapy water.
4. Saturate each pager assembly with warm soapy water several times. Flex the flipper portion of the pager to verify flippers operate freely.
5. Push the piston to the back of the tube to expose the bottom of tube. Wipe the bottom of the tube.

MAINTENANCE

Tune-Up Your LidSaver™

When lids do not dispense correctly your LidSaver™ may need to be adjusted. Order a tune-up kit. See www.Vollrath.com for ordering information.

TROUBLESHOOTING

Problem	Might be Caused By	Course of Action
More than one lid releases when opening door	Your lid or cup may be incorrect for your LidSaver™ 2 Mini settings.	Read label on “lid plate”. If this does not match your lids, order a lid change kit” to reset your LidSaver™ 2 for your lid.
	LidSaver™ 2 Mini may be overfilled. When lids are compressed too tightly from overstocking they will not dispense well. Instruct staff to not overstock lids.	Remove lids and cups and flake the stack. Avoid overstocking when loading.
	Pager flipper not returning to proper working position after loading lid stack.	Using warm soapy water, thoroughly saturate pager and flipper until flipper operates freely.
	Pager not securely fastened down.	Grasp each pager to determine if it is loose and allows movement within the adjustment slot. Order a tune-up kit to set these components accurately.
Inconsistent dispensing	Due to manufacturing defects, damaged lids or cups or poorly stacking types, some lids or cups may not dispense as planned. Under these rare conditions your customer is still able to easily retrieve a lid.	

SERVICE AND REPAIR

Serviceable parts are available on Vollrath.com.

To avoid serious injury or damage, never attempt to repair the unit or replace a damaged power cord yourself. Do not send units directly to The Vollrath Company LLC. Please contact Vollrath Technical Services for instructions.

When contacting Vollrath Technical Services, please be ready with the item number, model number (if applicable), serial number, and proof of purchase showing the date the unit was purchased.

WARRANTY STATEMENT FOR THE VOLLRATH CO. L.L.C.

This warranty does not apply to products purchased for personal, family or household use, and The Vollrath Company LLC does not offer a written warranty to purchasers for such uses.

The Vollrath Company LLC warrants the products it manufactures or distributes against defects in materials and workmanship as specifically described in our full warranty statement. In all cases, the warranty runs from the date of the end user’s original purchase date found on the receipt. Any damages from improper use, abuse, modification or damage resulting from improper packaging during return shipment for warranty repair will not be covered under warranty.

For complete warranty information, product registration and new product announcement, visit www.vollrath.com.



Outperform every day.™

www.vollrath.com

The Vollrath Company, L.L.C.

1236 North 18th Street
 Sheboygan, WI 53081-3201 U.S.A.
 Main Tel: 800.624.2051 or 920.457.4851
 Main Fax: 800.752.5620 or 920.459.6573
 Customer Service: 800.628.0830
 Canada Customer Service: 800.695.8560

Technical Services

techservicereps@vollrathco.com
 Induction Products: 800.825.6036
 Countertop Warming Products: 800.354.1970
 All Other Products: 800.628.0832