



Outperform every day.™

Project:

Item Number:

Quantity:

One Well Hot Modules

The Vollrath Company, L.L.C.

ONE WELL HOT MODULES



DESCRIPTION

Vollrath's full-size single well drop-ins keep hot foods at proper serving temperatures. They designed for top-mount installation and do not require hard-wiring

SHORT DESCRIPTION

Single well hot-drop-in, flange and full-size well, 300 series stainless steel, standard or manifold drain, insulated on all non-exposed sides, cord with plug, stainless steel remote control panel, mounting clips.

Note: Orders for drop-ins cannot be canceled or returned.

Note: Drop-in meets NSF4 performance standards only when using moist heat. Operation with water is required for even heating of the food product.

Item Numbers		Description	
Standard Drain	Manifold Drain w/Auto-Fill	Control	Voltage
1000 Watts Per Well			
3646601	3646661	Infinite	120
3646611	3646681	Thermostatic	
3646701	3646761	Infinite	208V - 240
3646711	3646781	Thermostatic	
625 Watts Per Well			
36466	3646660	Infinite	120
3646610	3646680	Thermostatic	
36467	3646760	Infinite	208
3646710	3646780	Thermostatic	
36471	3647160	Infinite	240
3647110	3647180	Thermostatic	

FEATURES

- Top flange and drawn well are 300 series stainless steel
- Include gasket for under drip edge
- Standard drain is ½" (1.3 cm) with individual well ball valves
- Manifold drain is 1" (2.5 cm) copper tubing with master manifold shut off
- Insulated on all sides, including between each well
- Includes 6' (1.8 m) cord with plug. Does not require hard-wiring
- Stainless steel control panel with individual controls and power indicator light for each well
- Control panel has 4' (121.9 cm) tethered connection for flexible mounting locations
- Includes standard mounting clips for use on counters up to 3" (7.6 cm) thick for easy installation
- Accepts full-size and fractional pans up to 6" (15.2 cm) deep
- Adapter bars are recommended when using fractional pans

WARRANTY

All models shown come with Vollrath's standard warranty against defects in materials and workmanship. For full warranty details, please refer to www.Vollrath.com.

ACCESSORIES

- ☐ Sheet pan adapter available. Item No. 19186

CLEARANCE AND ENVIRONMENT REQUIREMENTS

- Zero-clearance installation
- Indoor use only. Room temperature and HVAC can effect performance temperatures

Agency Listings



Due to continued product improvement, please consult www.vollrath.com for current product specifications.

Approvals	Date



Outperform every day.™

www.vollrath.com

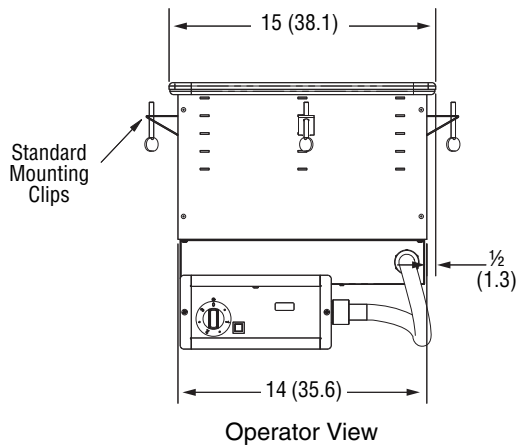
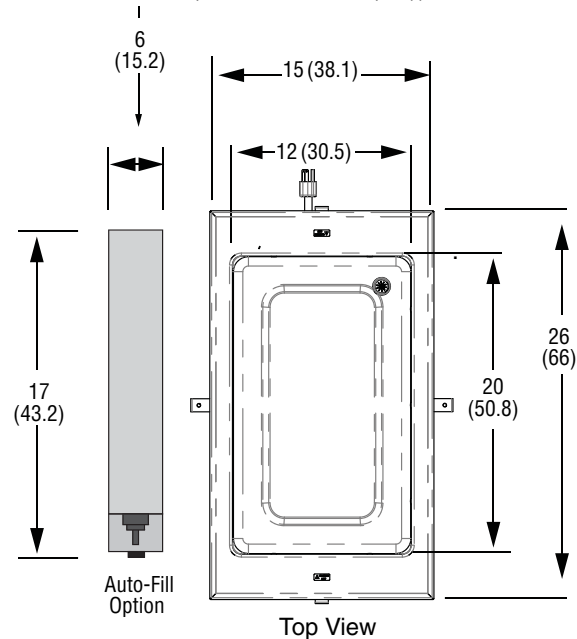
The Vollrath Company, L.L.C.

1236 North 18th Street
Sheboygan, WI 53081-3201 U.S.A.
Main Tel: 800.624.2051 or 920.457.4851
Main Fax: 800.752.5620 or 920.459.6573
Customer Service: 800.628.0830
Canada Customer Service: 800.695.8560

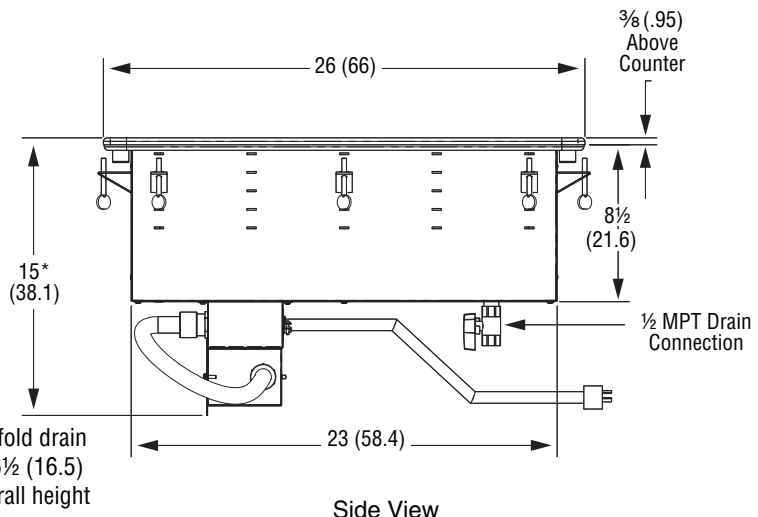
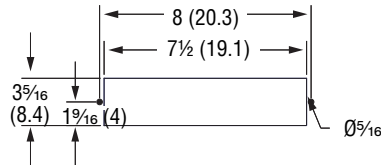
Technical Services
techservicereps@vollrathco.com
Induction Products: 800.825.6036
Countertop Warming Products: 800.354.1970
All Other Products: 800.628.0832

ONE WELL HOT MODULES

DIMENSIONS (Shown in inches (cm))



Control Panel Cutout

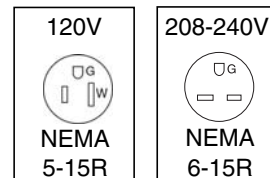


ELECTRICAL SPECIFICATIONS

Standard	Manifold w/Auto-Fill	Control	Cutout Dimension IN (CM)	Voltage	Amps	Plug
1000 Watts Per Well						
3646601	3646661	Infinite	14¼ x 25¼ (36.2 x64.1)	120V	8.3	NEMA 5-15P
3646611	3646681	Thermostatic		208V - 240V	3.6-4.2	NEMA 6-15P
3646701	3646761	Infinite				
3646711	3646781	Thermostatic				
625 Watts Per Well						
36466	3646660	Infinite	14¼ x 25¼ (36.2 x64.1)	120V	5.2	NEMA 5-15P
3646610	3646680	Thermostatic		208V	3.0	NEMA 6-15P
36467	3646760	Infinite				
3646710	3646780	Thermostatic				
36471	3647160	Infinite				
3647110	3647180	Thermostatic				

Note: Opening cutout must have a 7/8" (2.2 cm) corner radius.

Straight Blade Receptacles



NOTICE: Do NOT modify the cord or plug on the drop-in. Modifying any component may damage the drop-in or cause injury, and will void the warranty.



Outperform every day.™

www.vollrath.com

The Vollrath Company, L.L.C.

1236 North 18th Street
Sheboygan, WI 53081-3201 U.S.A.
Main Tel: 800.624.2051 or 920.457.4851
Main Fax: 800.752.5620 or 920.459.6573
Customer Service: 800.628.0830
Canada Customer Service: 800.695.8560

Technical Services
techservicereps@vollrathco.com
Induction Products: 800.825.6036
Countertop Warming Products: 800.354.1970
All Other Products: 800.628.0832