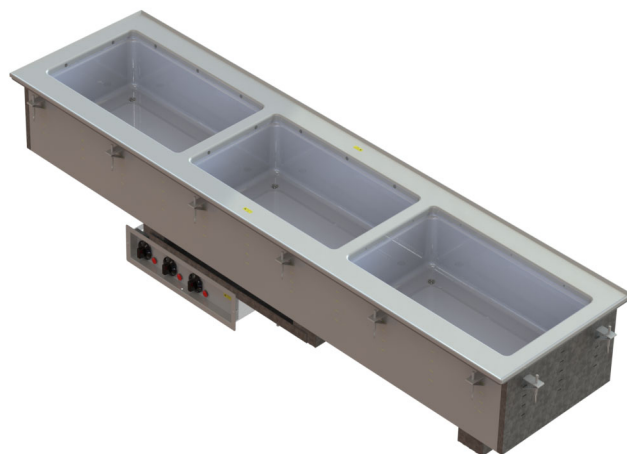




Project:
Item Number:
Quantity:

SHORT SIDE HOT DROP-INS



DESCRIPTION

Vollrath's Short Side Hot Drop-ins turn full-size pans sideways for a more narrow presentation. They are designed for top-mount installation and do not require hard wiring.

SHORT DESCRIPTION

Rotated well hot-drop-ins, flange and full-size wells, 300-series stainless steel, standard or manifold drain, insulated on all non-exposed sides, cord with plug, stainless steel remote control panel, and mounting clips.

Note: Drop-in meets NSF4 performance standards only when using moist heat. Operation with water is required for even heating of the food product.

Note: Orders for drop-ins cannot be canceled or returned.

WARRANTY

All models shown come with Vollrath's standard warranty against defects in materials and workmanship. For full warranty details, please refer to www.Vollrath.com.

Agency Listings



Approvals	Date

Due to continued product improvement, please consult www.vollrath.com for current product specifications.

Item Numbers			Description	
1000 Watts Per Well				
Standard	Manifold	Manifold w/ Auto-Fill	Control	Voltage
Two Well				
36646	3664620	3664630	Thermostatic	208-240
36647	3664720	3664730	Infinite	
Three Well				
36648	3664820	3664830	Thermostatic	208-240
36649	3664920	3664930	Infinite	
Four Well				
36650	3665020	3665030	Thermostatic	208-240
36651	3665120	3665130	Infinite	
625 Watts Per Well				
Two Well				
36640	3664020	3664030	Thermostatic	120
36641	3664120	3664130	Infinite	
Three Well				
36642	3664220	3664230	Thermostatic	120
36643	3664320	3664330	Infinite	
Four Well				
36644	3664420	3664430	Thermostatic	120
36645	3664520	3664530	Infinite	

FEATURES

- Top flange and drawn well are 300-series stainless steel.
- Included gasket for under drip edge.
- Standard drain is ½" (1.3 cm) with individual well ball valves.
- Manifold drain is 1" (2.5 cm) copper tubing with master manifold shut off.
- Insulated on all sides, including between each well.
- Includes 6' (1.8 m) cord with plug. Does not require hard-wiring.
- Stainless steel control panel with individual controls and power indicator light for each well.
- Control panel has 4' (121.9 cm) tethered connection for flexible mounting locations.
- Includes standard mounting clips for use on counters up to 3" (7.6 cm) thick for easy installation.
- Accepts full-size and fractional pans up to 6" (15.2 cm) deep.
- Adapter bars are recommended when using fractional pans.
- **Optional** To replace drip free flange with flat flange, add "-FF" to item number.

ACCESSORIES

- Sheet pan adapter available. Item No. 19186.

CLEARANCE AND ENVIRONMENT REQUIREMENTS

- Zero-clearance installation.
- Indoor use only. Room temperature and HVAC can effect performance temperatures.



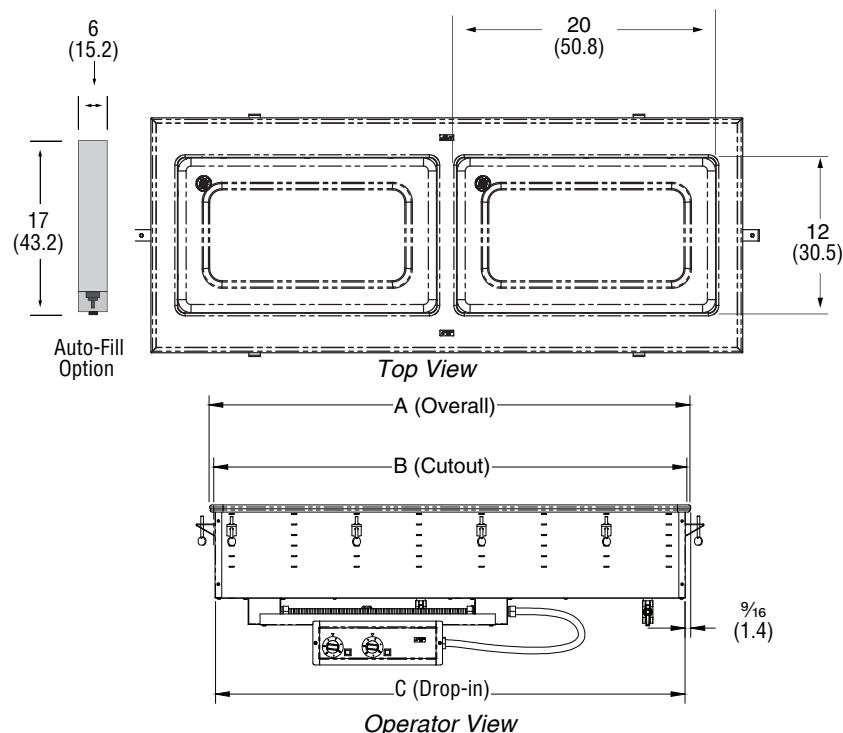
www.vollrath.com

The Vollrath Company, L.L.C.
1236 North 18th Street
Sheboygan, WI 53081-3201 U.S.A.
Main Tel: 800.624.2051 or 920.457.4851
Main Fax: 800.752.5620 or 920.459.6573
Customer Service: 800.628.0830
Canada Customer Service: 800.695.8560

Technical Services
techservicereps@vollrathco.com
Induction Products: 800.825.6036
Countertop Warming Products: 800.354.1970
All Other Products: 800.628.0832

SHORT SIDE HOT DROP-INS

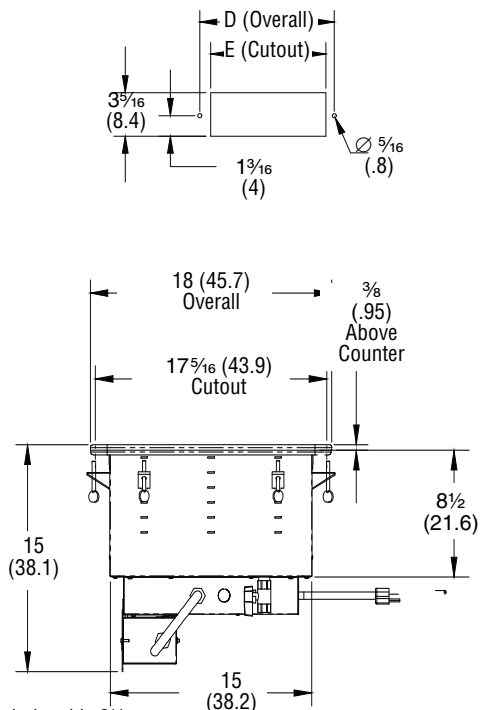
DIMENSIONS Shown in inches (cm)



Controls must be mounted on the opposite side of the unit from the drain pipes to maintain proper orientation.

*Manifold drain adds 6 1/2 (16.5) to overall height

Control Panel Cutout

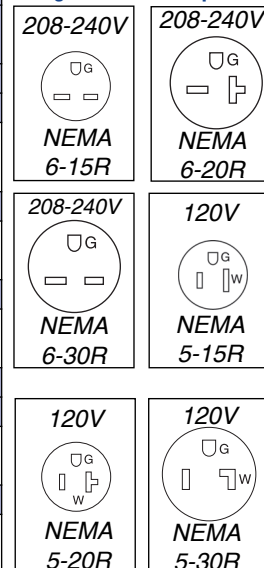


SPECIFICATIONS

Item Numbers			Control	Dimensions					Electrical		
				Module			Control Box				
Standard	Manifold	Manifold w/ Auto-Fill		(A)	(B)	(C)	(D)	(E)			
				Overall	Cutout	Drop-in	Overall	Cutout	Voltage	Amps	Plug
1000 Watts Per Well											
Two Well											
36646	3664620	3664630	Thermostatic	45 ⁷ / ₁₆	44 ¹¹ / ₁₆	44 ³ / ₈	11 ³ / ₄	11 ¹ / ₄	208 - 240	7.2 - 8.3	NEMA 6-15P
36647	3664720	3664730	Infinite	(114.6)	(113.5)	(112.7)	(29.9)	(28.6)			
Three Well											
36648	3664820	3664830	Thermostatic	66 ⁷ / ₈	66 ¹ / ₈	65 ³ / ₄	15 ¹ / ₂	15	208 - 240	10.8 - 12.5	NEMA 6-20P
36649	3664920	3664930	Infinite	(169.8)	(167.9)	(167.1)	(39.4)	(38.1)			
Four Well											
36650	3665020	3665030	Thermostatic	88 ⁹ / ₁₆	87 ¹ / ₂	87 ³ / ₁₆	19 ¹ / ₄	18 ¹³ / ₁₆	208 - 240	14.4 - 16.7	NEMA 6-30P
36651	3665120	3665130	Infinite	(225)	(222.3)	(221.5)	(48.9)	(47.6)			
625 Watts Per Well											
Two Well											
36640	3664020	3664030	Thermostatic	45 ⁷ / ₁₆	44 ¹¹ / ₁₆	44 ³ / ₈	11 ³ / ₄	11 ¹ / ₄	120	10.4	NEMA 5-15P
36641	3664120	3664130	Infinite	(114.6)	(113.5)	(112.7)	(29.9)	(28.6)			
Three Well											
36642	3664220	3664230	Thermostatic	66 ⁷ / ₈	66 ¹ / ₈	65 ³ / ₄	15 ¹ / ₂	15	120	15.6	NEMA 5-20P
36643	3664320	3664330	Infinite	(169.8)	(167.9)	(167.1)	(39.4)	(38.1)			
Four Well											
36644	3664420	3664430	Thermostatic	88 ⁹ / ₁₆	87 ¹ / ₂	87 ³ / ₁₆	19 ¹ / ₄	18 ¹³ / ₁₆	120	20.8	NEMA 5-30P
36645	3664520	3664530	Infinite	(225)	(222.3)	(221.5)	(48.9)	(47.6)			

Note: Opening cutout must have a 7/8" (2.2 cm) corner radius.

Straight Blade Receptacles



NOTICE: Do NOT modify the cord or plug on the drop-in. Modifying any component may damage the drop-in or cause injury, and will void the warranty.



www.vollrath.com

The Vollrath Company, L.L.C.

1236 North 18th Street
Sheboygan, WI 53081-3201 U.S.A.
Main Tel: 800.624.2051 or 920.457.4851
Main Fax: 800.752.5620 or 920.459.6573
Customer Service: 800.628.0830
Canada Customer Service: 800.695.8560

Technical Services
techservicereps@vollrathco.com
Induction Products: 800.825.6036
Countertop Warming Products: 800.354.1970
All Other Products: 800.628.0832