

## STANDARD REFRIGERATED COLD-PAN DROP-INS



### AGENCY LISTINGS



### WARRANTY

All models shown come with Vollrath's standard warranty against defects in materials and workmanship. For full warranty details, please refer to [vollrathfoodservice.com](http://vollrathfoodservice.com).

### CLEARANCE AND ENVIRONMENT

- Needed clearance is zero on sides, 3" (7.6 cm) from the condenser air inlet and outlet, and 1.5" (3.8 cm) at the bottom.
- Follow all regulations, warnings, and cautionary guidance specific to products that utilize R290 refrigerant.
- This unit is made for indoor use only.
- Requires at least 80 square inches for both fresh-air intake and exhaust. See back page for details.
- Use with adapter bars and/or templates.

Approvals	Date

*Due to continued product improvement, please consult [vollrathfoodservice.com](http://vollrathfoodservice.com) for current product specifications.*

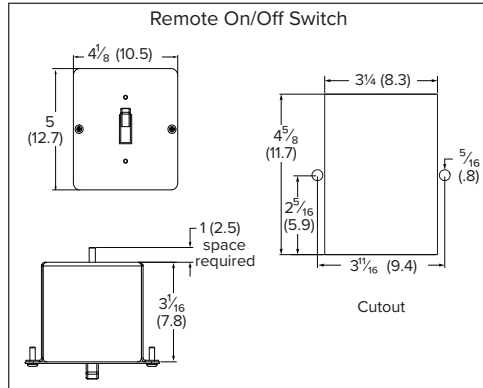
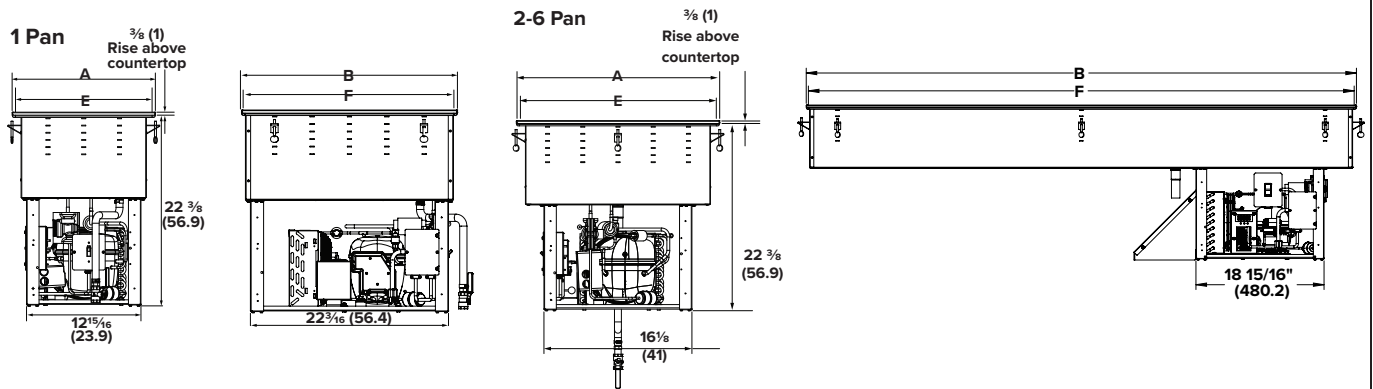
### ITEMS

Item	Description	False-Bottom Perforated *reduces well depth by 1" (2.5 cm)
FC-4CP-01120-R	1-Pan	70100
FC-4CP-02120-R	2-Pan	36913-2
FC-4CP-03120-R	3-Pan	36914-2
FC-4CP-04120-R	4-Pan	36915-2
FC-4CP-05120-R	5-Pan	36916-2
FC-4CP-06120-R	6-Pan	98855-2

### FEATURES & BENEFITS

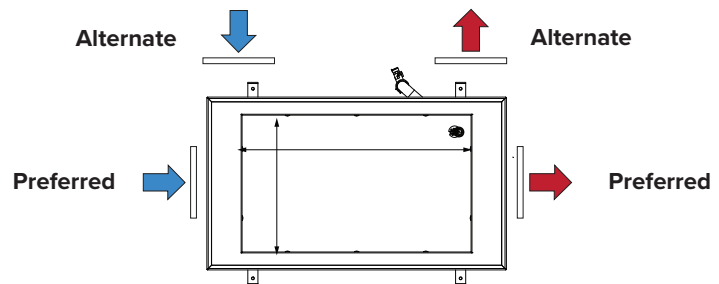
- Flange, fabricated well, and optional false bottoms are 300-series stainless steel.
- Units utilize R290 refrigerant, which has a lower GWP (Global Warming Potential) than many previously-used refrigerants.
- Unit is designed for top-mount installation.
- Under-drip-edge gasket is included.
- Flat work surface around opening provides level prep space.
- A full-perimeter drip edge contains spills and condensation within the stainless steel countertop area.
- Deep well accommodates standard 12" x 20" x 6" max depth (30.5 x 50.8 x 15.2 cm) pans when used with adapter bars.
- 1" (2.5 cm) integral drain is standard.
- Refrigeration coils surround the exterior side walls of well for maximum cooling.
- The inner well assembly is insulated with foamed-in-place polyurethane for efficiency and performance.
- Condensing unit is suspended below well.
- Exterior housing is 20-gauge galvanized steel.
- Remote on/off switch with 4 ft. (1.2 m) cord, can be mounted to any cabinet side.
- 6 ft (1.5 m) cord with plug is included.
- Drip-free flange can be replaced with flat flange by adding "FF" to item number.

# STANDARD REFRIGERATED COLD-PAN DROP-INS




## VENTING REQUIREMENTS

Two customer-supplied louvers (one intake and one discharge) must be installed in the cabinet to ensure adequate ventilation; preferred locations are the short ends.



## SPECIFICATIONS

Item	Pans	Dimensions						Louvers	Weight LB (Kg)	Comp. (HP)	Peak Heat of Rej. (BTUH)	Refrig. Chg. grams	V	Amps	Plug & Receptacle	
		Overall		Inner		Cutout										
		A	B	C	D	E	F									
FC-4CP-01120-R	1	15 (38.1)	26 (66)	11 7/8 (30.2)	19 7/8 (50.5)	14 1/4 (36.2)	25 1/4 (64.1)	8x10 (20.3x 25.4)	91 (41.3)	1/4	2800	55	120	3.2	NEMA 5-15P &  5-15R Straight Blade  	
FC-4CP-02120-R	2	26 (66)	29 (73.7)	19 7/8 (50.5)	24 3/4 (62.9)	25 1/4 (64.1)	28 1/4 (71.8)		103 (46.7)							60
FC-4CP-03120-R	3		41 1/2 (105.4)						37 1/2 (95.3)			40 3/4 (103.5)				
FC-4CP-04120-R	4		54 3/4 (139.1)						50 1/4 (127.6)	54 (137.2)	1/3	4800		136 (61.7)		55
FC-4CP-05120-R	5		68 (172.7)						63 (160)	67 1/4 (170.8)				155 (70.3)		60
FC-4CP-06120-R	6		81 1/4 (206.4)						75 3/4 (192.4)	80 1/2 (204.5)				169 (76.7)		

**NOTICE:** Vollrath® Drop-Ins are made to order and cannot be returned. It is the responsibility of the installer to ensure cut-outs on new installations are correct, or retrofit installation dimensions match with Vollrath product dimensions. Vollrath will not guarantee that our models retrofit with specific competitive models (as competitive specifications can change without notice). We recommend countertop cut-outs be made after receipt of the Vollrath drop-in to ensure proper fit prior to cutting into countertop materials.

**NOTICE:** Do NOT modify the cord or plug. Modification may damage the drop-in or cause injury, and will void the warranty.

**VOLLRATH®**

The Vollrath Company, L.L.C.  
1236 North 18th Street  
Sheboygan, WI 53081-3201 U.S.A.  
Main Tel: 800.624.2051 or 920.457.4851  
Main Fax: 800.752.5620 or 920.459.6573  
Customer Service: 800.628.0830  
Canada Customer Service: 800.695.8560

Technical Services  
techservicereps@vollrathco.com  
Induction: 800.825.6036  
Countertop Warming: 800.354.1970  
Other Products: 800.628.0832